

What to do if a Person is Symptomatic at School



If a person has one or more of these symptoms:

- Fever ($\geq 100.4^{\circ}\text{F}$) or chills
- Shortness of breath or difficulty breathing
- Muscle or body aches
- New loss of taste or smell
- Cough (new, changed, or worsening)



They should isolate at home AND get tested for COVID-19

- Congestion or runny nose
- Nausea, vomiting, or diarrhea
- Headache
- Fatigue
- Sore throat



They should isolate at home

Was **only ONE** symptom present?

NO

YES

Did the symptom resolve within 24 hours **OR** are they consistent with a diagnosed chronic illness?

NO

YES

Are they a known close contact?

NO

YES

If they do not receive an alternative named diagnosis from a health care provider **OR** do not get tested

They test **POSITIVE** for COVID-19

They test **NEGATIVE** for COVID-19 **OR** receive an alternative named diagnosis from a health care provider plus a negative test

AND

Identify close contacts
See **Tree 2** and follow [COVID-19 Contact Tracing Guide for K-12 Schools](#)

Return to school

They can return to school if:
1. No fever within the past 24 hours (without medication)
AND
2. Symptoms have significantly improved

Isolate at home

They can return to school after 10 days have passed since symptoms first appeared if:

1. No fever within the past 24 hours (without medication)

AND

2. Symptoms have significantly improved

Isolate at home

They can return to school after 5 days have passed since symptoms first appeared if:

1. No fever within the past 24 hours (without medication)

AND

2. NO Symptoms

OR

3. If symptoms are significantly improving **THEN** can return to school with a **NEGATIVE** Rapid test



DOH 820-229 October 27, 2021
To request this document in another format, call 1-800-525-0127. Deaf or hard of hearing customers, please call 711 (Washington Relay) or email civil.rights@doh.wa.gov.

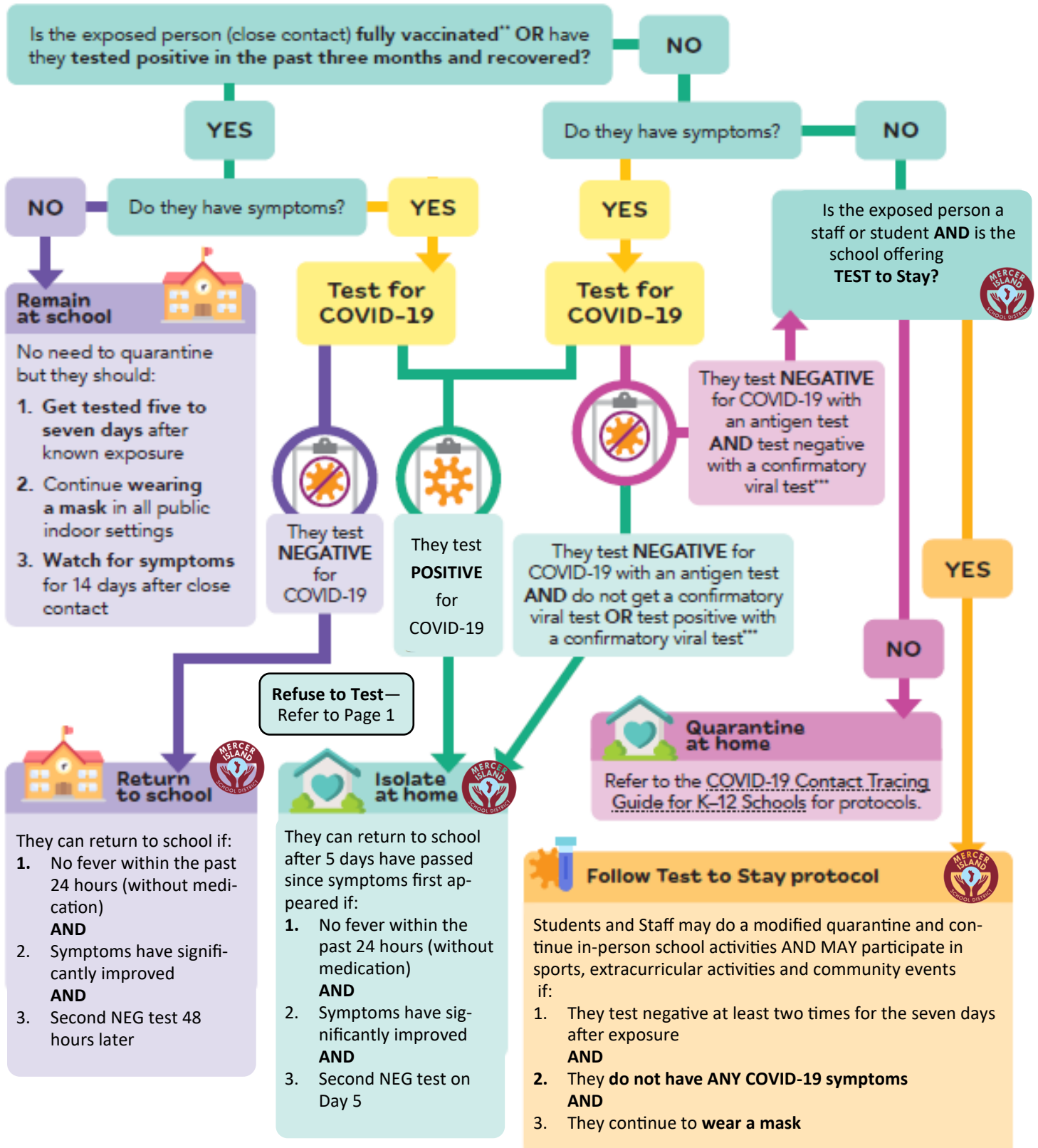
***Close contact:** Someone who was within 6 feet of a COVID-19 positive person for a total of 15 minutes or more within 24 hours during the case's contagious period. In a K-12 indoor/outdoor classroom, the close contact definition excludes students who were at least three feet away from an infectious student when both students were consistently and correctly wearing masks. Please see the [COVID-19 Contact Tracing Guide for K-12 Schools](#) for additional information. The definition of a close contact may vary in some situations. The local health department makes the ultimate determination of a close contact during its investigation, but may delegate this decision if appropriate.

NOTE: Mercer Island School District updated based on 1/7/2022 DOH guidance. This is a temporary document for MISD Staff and Students until DOH publishes a new flow chart.

Identify and Care for Close Contacts at School



If there is a COVID-19 positive person at school:



A person is fully vaccinated against COVID-19 when they've had two doses of the Moderna or Pfizer vaccine or one dose of the Johnson and Johnson vaccine and at least 2 weeks have passed since the last dose. NOTE: Fully vaccinated for students and staff 18 and older includes booster. * Confirmatory viral test may be a NAAT or an additional antigen test